

# ENT DIODE LASER

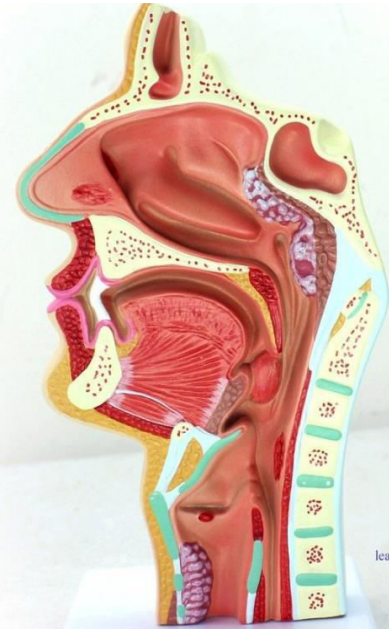
- 980nm Wavelength
- Super Pulsed Technology
- 20KHz Frequency
- Pre-set Programmes
- Compact and Light Weight
- CE & FDA Approved Procedures

31 Preset  
parameters

10 watt  
2 years  
warranty



**INTENSE MEDICAL & DENTAL  
SYSTEM LIMITED**  
“Bringing Innovations Closer to You”



# Laser solution for ENT Surgeries

## PRE-SET PARAMETERS-

- Cysts
- Accessory Auricle
- Tumors of Inner Ear
- Hemangioma
- Myringotomy
- Cholesteatoma
- Tympanitis
- Nasal Polyp/Rhinitis
- Turbinate reduction
- Cysts & Mucocele
- Epistaxis
- Stenosis & Synechia
- Sinus surgery
- D.C.R
- LAUP
- Tonsillectomy
- Glossectomy
- Vocal cord polyp & Nodule
- Epiglottectomy
- Strictures
- Pappiloma

## Applications:

1 It can be used in **contact mode**, in which the tip of the fiber is placed directly on the surface of the tissue. This mode is effective for both photocoagulation and vaporization of tissue, depending on the power density. At the low- or mid-power range, coagulation occurs; at a higher level, vaporization occurs.

2 The laser can be used in **non-contact mode**, in which the tip of the fiber remains several millimeters apart from the tissue. This mode is largely used for tissue photo biostimulation.





## Advantages of using Diode Laser

- *Microsurgical precision*
- *Minimal post-operative swelling of tissue*
- *Bloodless operation*
- *Clear view of operating field*
- *Minimal operative side effects*
- *Outpatient operation possible under local anesthesia*
- *Short recovery period*
- *Optimum preservation of surrounding mucosal tissue*
- *The diode laser 980nm wavelength has been recently introduced in ENT surgeries.*
- *The tissue cutting effect is comparable to Co2 laser, its coagulation effect are comparable to argon laser.*
- *This is a light weight, portable 980nm wavelength laser with fiber optic delivery system.*

# ACCESSORIES



**INTENSE MEDICAL & DENTAL  
SYSTEM LIMITED**  
“Bringing Innovations Closer to You”



Laser type-	Diode
Model-	1F0402
Max Power-	10W
Wavelength-	980nm
Operation Mode-	CW/Pulse
Pulse Duration-	25mic.sec
Repetition mode-	20,000Hz

Registered Office  
INTENSE MEDICAL & DENTAL SYSTEMS PVT. LTD.  
Plot no. 381, 2<sup>nd</sup> Floor, F.I.E.,  
Patparganj Industrial Area, Delhi – 110092  
Tel: 011-41824462  
E-mail: [imdsl@yahoo.com](mailto:imdsl@yahoo.com) Website:  
<http://imdsl.co.in>  
Visit us: <http://www.facebook.com/imdsl.india>